

# Certificate

## Certified Passive House component

for cool, temperate climate, valid until 31.12.2024

Category: **Facade anchor**  
 Manufacturer: **REISSER Schraubentechnik GmbH**  
**Ingelfingen-Criesbach, GERMANY**  
 Product name: **RDS-CA**  
**RDS-CW**

The following criteria were used in awarding this certificate:

### Efficiency Criterion

In a typical application\*, the construction fulfills the requirements of

$$\text{Eff.}_{fa} \leq 0.200 \text{ W/(kNK)}$$

### Comfort Criterion

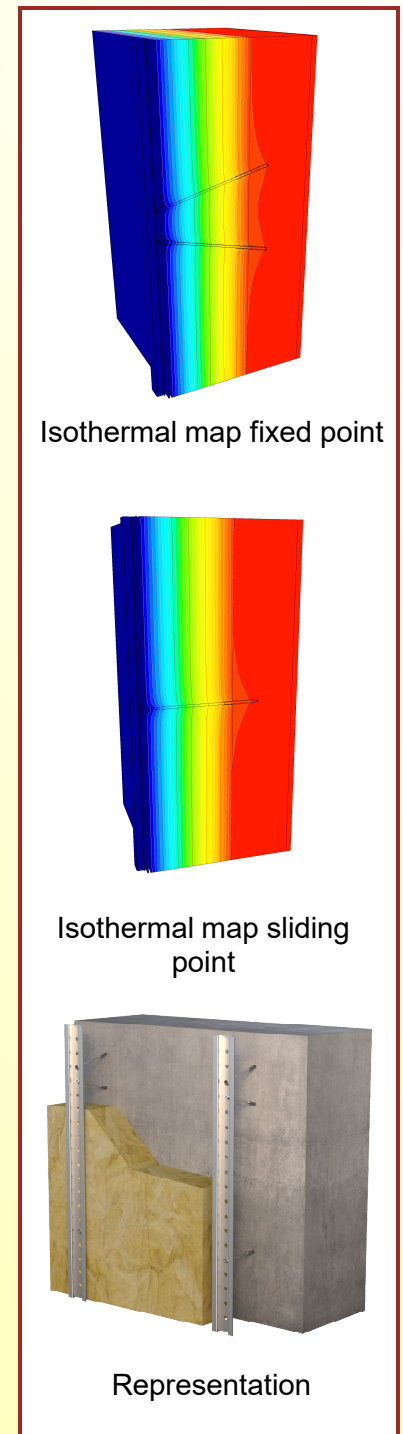
The inner surface must be warm enough to prevent mold as well as uncomfortable down-drafts and radiation losses.

$$\theta_{i,min} \geq 17^{\circ}\text{C}$$

### Thermal data of the certified component

	Thermal bridge coefficient	Minimum interior surface temperature
	$\chi$ [W/K]	$\theta_{i,min}$ [°C]
RDS-CA GP	0.0021	19.30
RDS-CA FP	0.0039	19.29
RDS-CW GP	0.0021	19.31
RDS-CW FP	0.0037	19.29

\* The criterion has been validated with a representative facade of a school building



# Data sheet REISSER Schraubentechnik GmbH RDS-CA, RDS-CW

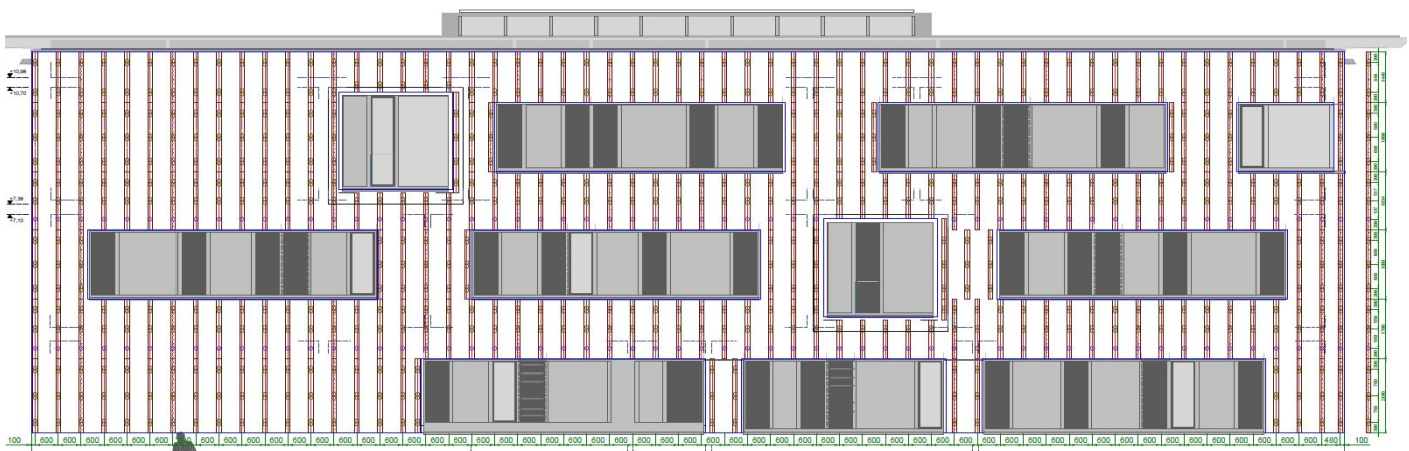
**Manufacturer** REISSER Schraubentechnik GmbH  
 Fritz-Müller-Str. 10, 74653 Ingelfingen-Criesbach  
<http://www.reisser-screws.com/>

Criteria validated based on reference facade	<b><math>\Delta U</math> [W/m<sup>2</sup>K]</b>
<b>LK I-VI RDS CA</b>	<b>0.0083</b>
<b>LK I-VI RDS CW</b>	<b>0.0078</b>

In order to validate the suitability, the manufacturer provides a static calculation and an associated installation plan for the reference facade.

The calculations are carried out for a reference facade with 24 cm insulation (0.035 W/(mK)).

Type	Energy efficiency	Quantity / m <sup>2</sup>		Load class / Facade weight	
	[W/(kNK)]	FP	SP	LC	[kN/m <sup>2</sup> ]
<b>RDS CA</b>	0.0237	1.91	0.38	VI	0.35
<b>RDS CW</b>	0.0222	1.91	0.38	VI	0.35



Installation-plan reference facade of the certified component

Load-class (LC)	Facade cladding	Facade weight [kN/m <sup>2</sup> ]	Efficiency criterion fulfilled?
I	Aluminium laminated	0.10	yes
II	ACM	0.15	yes
III	Fiber-cement plates	0.20	yes
IV	Acrylic glass	0.25	yes
V	Ceramics	0.30	yes
VI	Stone	< 0.35	yes

The classification criteria and the load class allocation can be found in the current criteria "Certified Passive House components – Facade anchors, Version 2.1, 27.05.2021".